



# MODEL 910WB

## CLASS 125 WAFER CHECK VALVE

<b>Job Name:</b>	<b>Contractor:</b>
<b>Job Location:</b>	<b>P.O. Number:</b>
<b>Engineer:</b>	<b>Representative:</b>
<b>Tag:</b>	<b>Wholesale Distributor:</b>

### Description

The Apollo Model 910WB Cast Iron Wafer Check valve provides full flow capabilities. It provides reliable and economical protection against reverse flow. The Apollo Wafer Check valve can reliably be installed in most plumbing and heating systems (or building service piping).

### Features

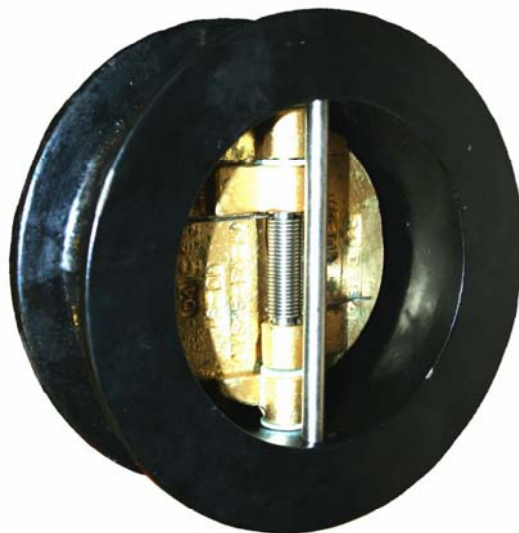
- Compatible with ANSI 125# & 150# Flanges
- Full Port
- Minimal Pressure drop
- Light Weight
- Spring Assisted Closing for quicker response

### Performance Rating

**Saturated Steam:** 125 psi (8.6 Bar) to 353°F(178°C) (2"-12")  
100 psi (6.9 Bar) to 338°F(170°C) (14"-24")

**Cold Working Pressure:** 200 psi (13.8 Bar) at 100°F (2"-12")  
150 psi (10.3 Bar) at 100°F (14"-24")

**Temperature Range:** -20°F to 406°F



### Order Information

SIZE	PART NUMBER
□ 2"	6WC108N1
□ 2.5"	6WC109N1
□ 3"	6WC100N1
□ 4"	6WC10AN1
□ 5"	6WC10BN1
□ 6"	6WC10CN1
□ 8"	6WC10EN1
□ 10"	6WC10GN1
□ 12"	6WC10HN1
□ 14"	6WC10JN1
□ 16"	6WC10KN1
□ 18"	6WC10MN1
□ 20"	6WC10NN1
□ 24"	6WC10PN1

### Material Specifications

NO.	PART	MATERIAL
1	BODY	CAST IRON (ASTM A126 CL B)
2	SEAT RING	NITRILE (BUNA-N)
3	DISC	ALUMINUM BRONZE
4	SPRING	STAINLESS STEEL 316
5	STEM	STAINLESS STEEL 316
6	SCREW	CARBON STEEL
7	PIN	STAINLESS STEEL 316

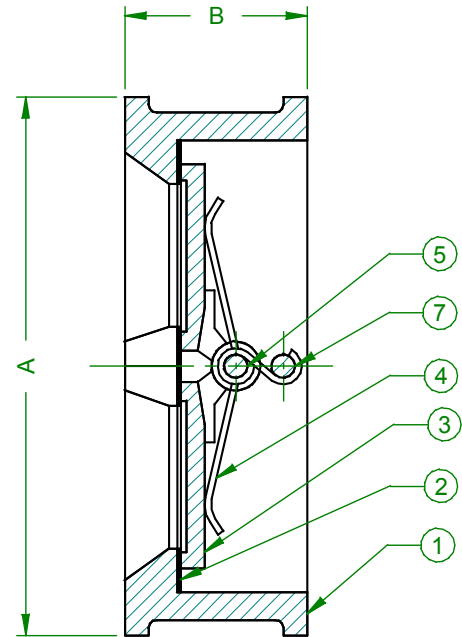
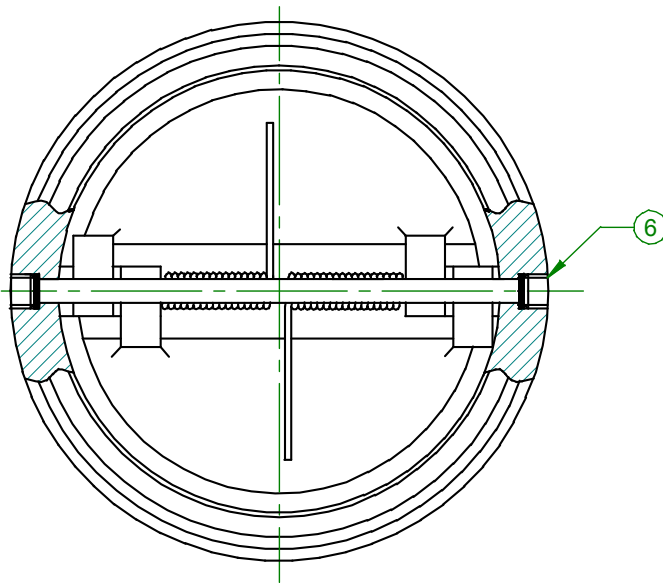
Conbraco Industries, Inc. 701 Matthews Mint Hill Rd. Matthews NC 28105 USA ; [www.apollovalves.com](http://www.apollovalves.com) ; 704-841-6000

Conbraco Industries can accept no responsibility for possible errors in this document and reserves the right to alter its product design or construction without notice and without incurring any obligation to make such changes on Conbraco products previously or subsequently sold. All product specifications are approximate and are provided for reference only.

# MODEL 910WB

## CLASS 125 WAFER CHECK VALVE

Job Name:	Contractor:
Job Location:	P.O. Number:
Engineer:	Representative:
Tag:	Wholesale Distributor:



SIZE	A	B	WT (LBS)
2"	4.00	2.12	3
2.5"	4.75	2.38	6
3"	5.25	2.62	8
4"	6.75	2.62	13
5"	7.50	3.25	17
6"	8.50	3.75	25
8"	11.00	5.00	47
10"	13.25	5.50	67
12"	16.00	7.12	118
14"	17.75	7.25	132
16"	20.00	7.50	184
18"	21.50	8.00	223
20"	23.74	8.38	333
24"	28.00	8.75	474

Conbraco Industries, Inc. 701 Matthews Mint Hill Rd. Matthews NC 28105 USA ; [www.apollovalves.com](http://www.apollovalves.com) ; 704-841-6000

Conbraco Industries can accept no responsibility for possible errors in this document and reserves the right to alter its product design or construction without notice and without incurring any obligation to make such changes on Conbraco products previously or subsequently sold. All product specifications are approximate and are provided for reference only.